

**ENR 2. AIR TRAFFIC SERVICES AIRSPACE**

**ENR 2.1 FIR, UIR, TMA**

Name Lateral Limits Vertical Limits Class of Airspace	Unit Providing Service	Call Sign Languages Area and Conditions Hours of Services	Frequency /Purpose	Remarks
<p>1</p> <p><b>COLOMBO FIR</b> 1000N 08000E - 1000N 08200E 0600N 09200E - 0200S 09200E 0200S 07800E - 0600N 07800E 1000N 08000E</p> <p><u>FL460</u> GND/WATER</p> <p>Class of Airspace : <u>FL460</u> <u>FL245</u> - <b>Class A</b></p> <p><u>FL 245</u> - <b>Class G</b> ( Except in GND / WATER Controlled airspace)</p>	<p>2</p> <p>Colombo ACC</p> <p>Colombo FIC</p>	<p>3</p> <p>Colombo Radar</p> <p>Colombo Airways (During Procedural Control) ENG H24</p> <p>Colombo ENG H24</p>	<p>4</p> <p>124.9 MHz</p> <p>124.9 MHz</p> <p>8879 KHZ 13306 KHZ</p> <p>3470 KHZ 5670 KHZ 11285 KHZ 13318 KHZ</p>	<p>5</p> <p>Stand by 126.0MHz</p> <p>Stand by 126.0MHz</p> <p>INO1, SSB</p> <p>SEA-1B, SSB</p> <p>SELCAL on all frequencies</p>
<p>UIR : Nil</p> <p><b>COLOMBO TERMINAL CONTROL AREA (TMA)</b> The airspace enclosed by the boundary starting from a point 094300N 0824300E thence clockwise along an arc of 200NM radius centred on 070003N 0804618E upto a point 050900N 0780000E thence along straight lines joining the points 060000N 0780000E - 060000N 0770000E - 070000N 0770000E - 090000N 0793000E - 100000N 0800000E - 100000N 0820000E thence straight line to the starting point ( 094300N 0824300E). <u>FL460</u> 10000FT ALT</p> <p>Class of Airspace : ( See page ENR 1.4-1 )</p> <p><b>Colombo TMA is sectorized within 50NM of KATUNAYAKE / Bandaranaike Intl. Airport, Colombo , RATMALANA/Colombo Intl. Airport Ratmalana and MATTALA/ Mattala Rajapaksa Intl. Airport as follows :</b></p> <p>A sector BTN KAT VOR R- 003 and R- 050 , bounded by the outer limit of joint CTR(*) and the arc of 50NM radius centred on KATUNAYAKE/ Bandaranaike Intl AP Colombo. ARP.</p> <p><u>FL460</u> 2500FT ALT</p> <p>Class of Airspace : (See Col...5)</p>	<p>Colombo ACC</p> <p>Colombo APP</p>	<p>Colombo Radar</p> <p>Colombo Director</p> <p>ENG H24</p>	<p>124.9 MHz 126.0 MHz</p> <p>132.4 MHz 120.9 MHz</p>	<p>Above FL150</p> <p>Within 60NM of VOR 'KAT' and below FL150</p> <p>(*) Joint control zone KATUNAYAKE / Bandaranaike Intl. and RATMALANA/Colombo Intl.</p> <p><u>FL460</u> <u>FL245</u> - <b>Class A</b></p> <p><u>FL245</u> 2500FT ALT - <b>Class C</b></p>

ENR 2.1 FIR, UIR, TMA

Name Lateral Limits Vertical Limits Class of Airspace	Unit Providing Service	Call Sign Language Area and Conditions of Use Hours of Service	Frequency / Purpose	Remarks
<p>1</p> <p>A sector BTN KAT VOR R- 050 and R-170, bounded by the outer limits of joint CTR(*) and the arc of 30NM radius centred on KATUNAYAKE/Bandaranaike Intl. AP Colombo ARP and the arc of 30NM centred on RATMALANA/Colombo Intl. AP Ratmalana ARP and the joining tangential line.</p> <p><u>FL460</u> 3500FT ALT</p>	<p>2</p> <p>Colombo APP / and or Mattala APP</p>	<p>3</p> <p>Colombo Director  Mattala Approach  ENG  H24</p>	<p>4</p> <p>132.4MHz 120.9 MHz  124.35MHz</p>	<p>5</p> <p>FL460 FL245  FL245 - Class C 3500FT ALT</p>
<p>A sector BTN KAT VOR R-170 and R-003 , bounded by the outer limits of joint CTR(*) and the arc of 50NM radius centred on KATUNAYAKE/Bandaranaike Intl. AP Colombo ARP and the arc of 50 NM radius centred on RATMALANA / Colombo Intl. AP Ratmalana ARP and the joining tangential .line.</p> <p><u>FL460</u> 2000FT ALT</p> <p>Class of Airspace : See Col. (5)</p>				<p>FL460 FL245  FL245 - Class C 2000FT ALT</p>
<p>A sector BTN KAT VOR R-050 and R-090, bounded by the arc of 30 NM radius centred on KATUNAYAKE/Bandaranaike Intl. ARP and the straight line joining the points 071132N 0804204E and 074354N 0803033E. .</p> <p><u>FL460</u> 7500FT ALT</p> <p>Class of Airspace : (see Column 5)</p>				<p>FL460 FL245  FL245 - Class C 7500FT ALT</p>
<p>A triangular sector bounded by the three straight lines joining the points 071132N 0804204E, 074354N 0803033E and 071157N 0811805E. .</p> <p><u>FL460</u> 9500FT ALT</p> <p>Class of Airspace : (see Column 5)</p>				<p>FL460 FL245  FL245 - Class C 9500FT ALT</p>
<p>A sector BTN KAT VOR R-090 and R-135, bounded by part of Geo-Meridian 80° 23E, KAT VOR R-135, arc of 25NM radius centred at 'MTL' VOR location (061814N 0810839E) limited by KAT VOR R-135 and MTL VOR R-090, part of MTL VOR R-090 between 25 NM &amp; 50NM from MTL VOR, arc of 50 NM radius centred at 'MTL' VOR and the tangential line drawn to this arc from the point 071157N 0811805E. .</p> <p><u>FL460</u> 10500FT ALT</p> <p>Class of Airspace : (see Column 5)</p>				<p>FL460 FL245  FL245 - Class C 10500FT ALT</p>



<b>2.1 FIR, UIR, TMA</b>					
Name Lateral Limits Vertical Limits Class of Airspace	Unit Providin g Service	Call Sign Language Area and Conditions of Use Hours of Service	Frequency / Purpose	Remarks	
1	2	3	4	5	
<p>A sector BTN MTL VOR R-270 and R-090 clockwise, bounded by arcs of 25 NM and 10nm radius centred at MTL' VOR location.</p> <p style="text-align: center;">FL 460 8900 FT ALT</p> <p>Class of Airspace : (see Column 5)</p> <p>A sector BTN MTL VOR R-090 and R-240 clockwise, bounded by arc of 25 NM centred at MTL VOR location limited by MTL VOR R-180 and R-240, part of MTL VOR R-240 between 25 NM from MTL VOR Location and the tangential line drawn between the two 50NM arcs centred at RATMALANA/Colombo Intl. AP Ratmalana ARP and MTL VOR Location, part of this tangential line between MTL VOR R-240 and arc of 50NM radius centred at MTL VOR location, the arc of 50NM radius centred at MTL VOR location starting from the end of the above tangential line and ending at MTL VOR R-090 anti-clockwise, part of MTL VOR R-090 between 50NM and 10 NM from MTL VOR Location, the arc of 10NM radius centred at MTL VOR location limited by MTL VOR R-090 and R- 180 anti-clockwise, and the part of MTL VOR R-180 between 10 NM &amp; 25NM from MTL VOR location.</p> <p style="text-align: center;">FL 460 3000 FT ALT</p> <p>Class of Airspace : (see Column 5)</p> <p>A sector BTN MTL VOR R-180 and R-270 clockwise, bounded by arcs of 25 NM and 10NM radius centred at MTL' VOR location.</p> <p style="text-align: center;">FL 460 5000 FT ALT</p> <p>Class of Airspace : (see Column 5)</p> <p>A sector BTN KAT VOR R-135 and R-170, bounded by the arc of 30 NM radius centred on RATMALANA/Colombo Intl. AP Ratmalana ARP, part of tangential line drawn between the arc of 50 NM radius centred on RATMALANA/Colombo Intl. AP Ratmalana ARP and the arc of 50NM radius centred at MTL VOR Location, MTL VOR R-240, and the arc of 25NM radius centred at MTL VOR location limited by MTL VOR R-240 and KAT VOR R-135.</p> <p style="text-align: center;">FL 460 6500 FT ALT</p> <p>Class of Airspace : (see Column 5)</p>	<p>Colombo APP/and or Mattala APP</p>	<p>Colombo Director</p> <p>Mattala Approach</p> <p>ENG</p> <p>H24</p>	<p>132.4MHz 120.9 MHz</p> <p>124.35MHz</p>	<p>FL460 FL245</p> <p>FL245 8900FT ALT</p> <p>FL460 FL245</p> <p>FL245 3000FT ALT</p> <p>FL460 FL245</p> <p>FL245 5000FT ALT</p> <p>FL460 FL245</p> <p>FL245 6500FT ALT</p>	<p>- Class A</p> <p>- Class C</p> <p>- Class A</p> <p>- Class C</p> <p>- Class A</p> <p>- Class C</p> <p>- Class A</p> <p>- Class C</p>

AREA CHART - ICAO

ARRIVAL, TRANSIT AND DEPARTURE ROUTES

TMA COLOMBO

**LEGEND**

TERMINAL CONTROL AREA (TMA)  
Name of TMA: TMA COLOMBO  
Upper Limit: FL460  
Lower Limit: 10000FT ALT  
Class of airspace: COLOMBO ACC  
Unit providing area control service: 132.4  
Radio frequency: 132.4

CONTROL ZONE (CTR)  
FLIGHT INFORMATION REGION (FIR)  
TRANSIT ROUTE  
REPORTING POINT (REP)

**ATS ROUTES**

One Way Route  
Route Designator: P570  
Distance in Nautical Miles: 137 - 62 - 317  
Magnetic Track: FL280  
Minimum Cruising Level: 10000FT ALT

Two Way Route  
Route Designator: G325  
Minimum Cruising Level: 10000FT ALT

**RESTRICTED AIRSPACE**

Identification: VCD6  
Vertical limits: FL150 GND

P = Prohibited  
R = Restricted  
D = Danger

**Radio Navigation Aids (NAVAID)**

Co-located DVOR and DME  
Name: KATUNAYAKE  
NAVIAID Type & Frequency: DVOR/DME 114.1  
Identification: KAT  
Geographical coordinates: 07°09'41"N 079°52'07"E  
Elevation of DME Antenna: 10M

**NON-DIRECTIONAL RADIO BEACON (NDB)**

**AERODROMES**

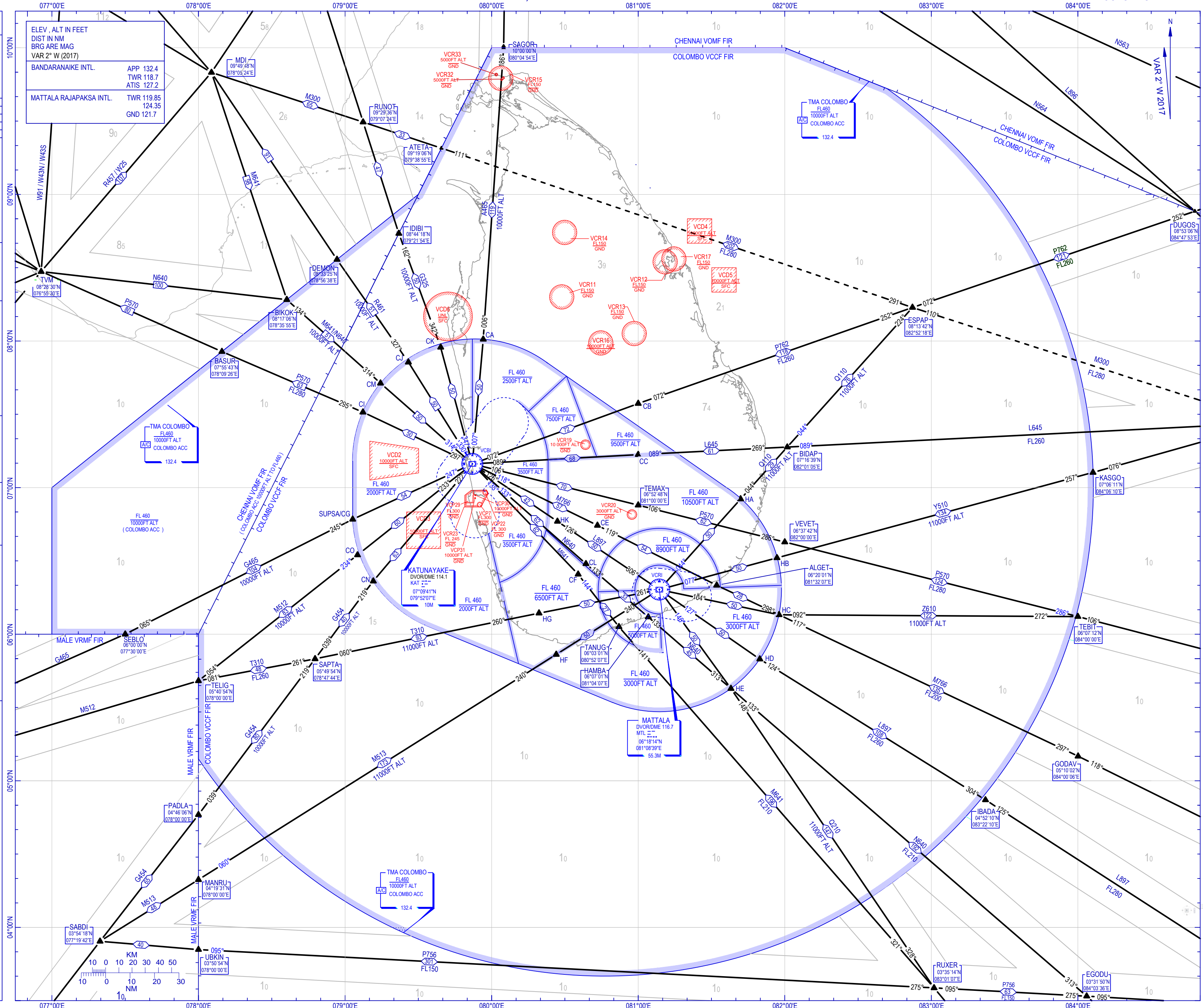
Civil Aerodrome  
Civil/Military Aerodrome  
Military Aerodrome

**COM FAILURE**  
As specified in ENR 1.1, Para 5

**Area Minimum Altitude (AMA)**  
Each 1° quadrilateral contains an area minimum altitude (AMA) which represents the lowest altitude which may be used instrument meteorological conditions (IMC). The AMA provides a minimum clearance of 1000ft above all obstacles in the quadrilateral, it is represented in thousands and hundred of feet above mean sea level.  
Example :1500 feet 15

**CO-ORDINATES**

Identification	Co-ordinates
CA	08°00'19"N 079°56'32"E
CB	07°34'24"N 081°00'00"E
CC	07°13'30"N 081°00'00"E
CE	06°44'31"N 080°43'19"E
CF	06°24'31"N 080°35'25"E
SUPSA/CG	06°47'01"N 079°03'08"E
CI	07°30'49"N 079°07'26"E
CJ	07°51'19"N 079°25'56"E
CK	07°57'25"N 079°39'08"E
CL	06°28'49"N 080°38'37"E
CM	07°42'43"N 079°14'32"E
CN	06°21'43"N 079°11'32"E
CO	06°32'25"N 079°05'05"E
HA	06°55'19"N 081°41'56"E
HB	06°31'15"N 081°56'50"E
HC	06°07'56"N 081°57'39"E
HD	05°49'42"N 081°49'54"E
HE	05°37'38"N 081°38'06"E
HF	05°51'42"N 080°26'27"E
HG	06°08'38"N 080°19'23"E
HK	06°46'10"N 080°26'56"E



Changes : way point "ANIVE" to renamed as "TELIG"  
CIVIL AVIATION AUTHORITY OF SRI LANKA